

Confidential

**Model FP 2000 \***  
**RCI Technologies**  
**Universal Fuel Purifier**

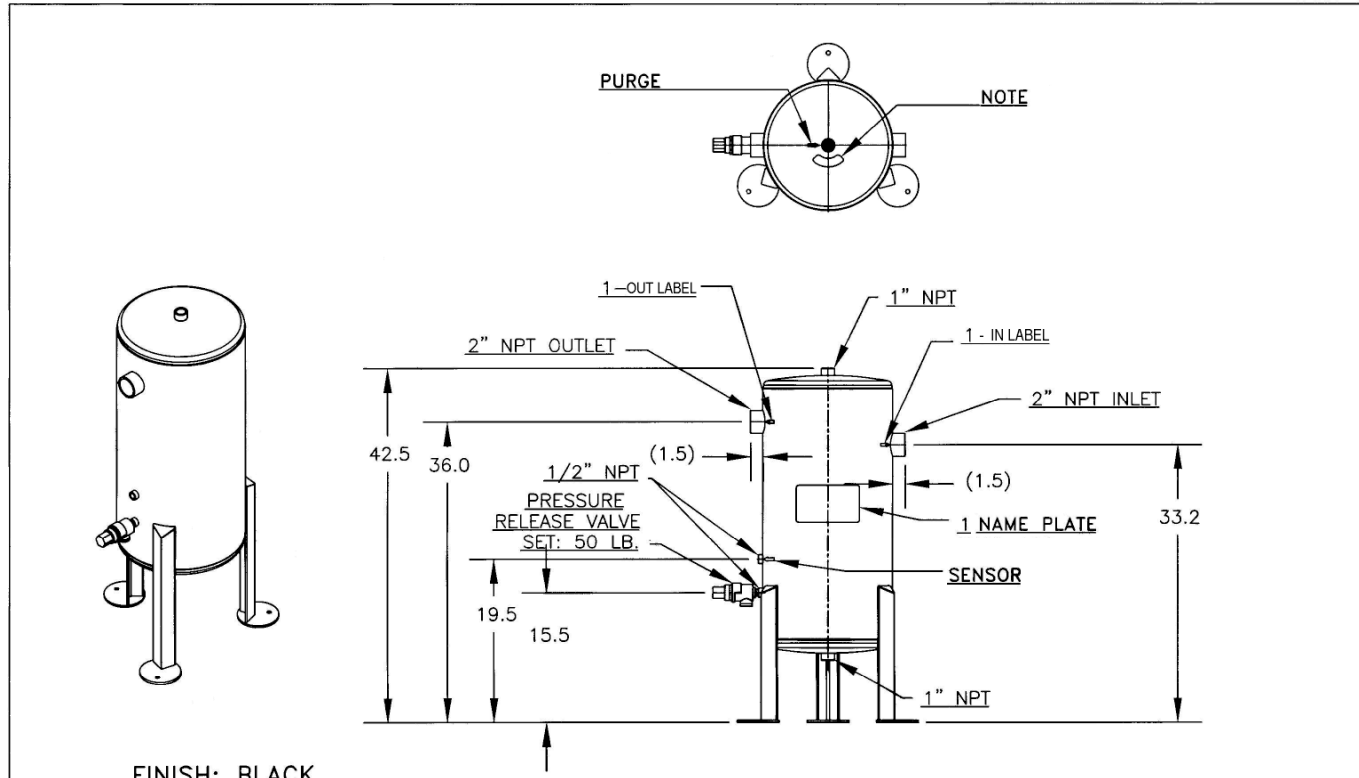
Nominal Flow:.. 100 gal/min (378.5 lts/min)  
 In & Out Couplings: ..... 2" NPT  
 Top Port:..... 1" NPT  
 Sensor Port \*\*: ..... 1/2" NPT  
 Drain Port: ..... 1" Drain  
 Height:.....42.5" (1079.5 mm)  
 Width:.....15.0" (381 mm)  
 Gross Weight:..... 124 lbs.

\*\*Water Sensor Kit optional.  
 \*Standard Factory Preset Relief Valve.



**APPLICATIONS**

Larger Pumping Stations  
 Aircraft Fueling  
 Fuel Docks



FINISH: BLACK

										NAME <b>FUEL/WATER SEPARATOR</b> <b>RCI</b>			DR. RLT	DATE <b>30 MAR 06</b>	
													CK. KJM	SCALE .062"=1"	
													MATERIAL REF:		
										XXXX			PART NO.		
										RELEASED			FP 2000-S		
										03/30/06 RT KJM			SIZE		
										RCI Technologies San Dimas, California			A		
TRANS. NO.	CHG. LET.	WAS	DATE	BY	APP.	TRANS. NO.	CHG. LET.	WAS	DATE	BY	APP.				